



## The most important advantages at a glance:

- High-quality system tools for professional electrical installation
- Perfectly tailored to the processing and installation of our electrical installation systems
- Tried-and-tested quality and technology
- Extremely time-saving and durable
- Wide range of accessories



Product film  
[www.kaiser-elektro.org/tools](http://www.kaiser-elektro.org/tools)

## Tools | Product lines

Diamond grinding head and drilling template for masonry installation	p. 300
Cover with spirit level	p. 302
Hardened metal cutter for composite thermal insulation systems	p. 303
Cutter for cavity wall installation	p. 305
Profix distance cutter	p. 307
Hardened metal cutter for cavity wall installation	p. 308
VARIOCUT universal hole cutter	p. 312
General tools	p. 314

	<div> Diamond grinding head for dust extraction  Diamond grinding head  Turbo cutter MULTI 4000  MULTI 2000 HM  Hardened metal cutter  Hardened metal cutter  Hardened metal cutter for sheet metal boarding  Hardened metal cutter for composite thermal  insulation systems Ø 20 mm  Standard cutter  Bi-metallic cutter Ø 120 mm  VARIOCUT universal hole cutter 24-68  VARIOCUT universal hole  cutter 65-120 </div>												
	p. 300	p. 301	p. 305	p. 308	p. 310	p. 310	p. 303	p. 303	p. 309	p. 310	p. 312	p. 312	
Material	Recommended RPM												
Plasterboard	-	-	1,000		-	-	1,000	500	1,000	500	800 - 1,400	700 - 1,400	
Plywood (up to V20), uncoated	-	-	600	600	-	-	800	450	-	450	800 - 1,400	800 - 1,400	
Plywood, coated	-	-	-	450	-	-	700	400	-	450	800 - 1,400	800 - 1,400	
OSB Boards	-	-	-	650 <sup>1</sup>	-	-	600	400	-	-	300 - 400 <sup>1</sup>	200 - 400 <sup>1</sup>	
Wood, soft	-	-	850	850	-	-	1,000	500	850	550	800 - 1,400	800 - 1,400	
Wood, hard	-	-	-	650	-	-	600	400	-	450	800 - 1,400	800 - 1,400	
Laminated material (Pertinax etc.)	-	-	-	450	-	-	500	350	-	450	-	-	
Mineral fibreboard	-	-	-	600	-	-	800	500	-	500	800 - 1,400	800 - 1,400	
MDF boards	-	-	-	-	700	-	-	-	-	450	800 - 1,400	800 - 1,400	
Sheet steel	-	-	-	-	-	150 <sup>2</sup>	-	-	-	200 <sup>2</sup>	300 - 600 <sup>3</sup> Ø 20 - 64 mm	200 - 600 <sup>3</sup> Ø 65 - 120 mm	
Aluminium sheet	-	-	-	-	-	350	-	-	200	-	300 - 600 <sup>3</sup> Ø 20 - 64 mm	200 - 600 <sup>3</sup> Ø 65 - 120 mm	
Multiplex boards	-	-	-	-	700	-	-	-	-	-	-	-	
Panels	-	-	-	-	-	-	-	-	-	-	800 - 1,400 <sup>4</sup>	700 - 1,400 <sup>4</sup>	
Ceiling modules	-	-	-	-	-	-	-	-	-	-	800 - 1,400	800 - 1,400	
Wall tiles	-	-	-	-	-	-	-	-	-	-	400 <sup>4</sup>	250 <sup>4</sup>	
Hard rubber	-	-	-	-	-	-	-	-	-	-	1,200 <sup>5</sup>	1,200 <sup>5</sup>	
Solid masonry (lime sand brick, Poroton, Ytong and many more)	1,600 - 2,000	1,600 - 2,000	-	-	-	-	-	-	-	-	-	-	
Insulated and plastered external facade	-	-	-	-	-	-	1,000	500	-	-	-	-	
Technical requirement													
Required drill output	1,000 W	1,000 W	600 W	600 W	600 W	1,000 W	600 W	600 W	600 W	600/ 1,000 W	max. 700 W	max. 700 W	
Cut hole Ø													
20 mm	-	-	-	-	-	-	•	-	-	-	-	-	-
35 mm	-	-	•	-	-	-	-	-	-	-	-	-	-
68 mm	•	•	•	•	•	•	-	•	•	-	-	-	-
74 mm	-	-	•	•	-	•	-	-	-	-	-	-	-
82 mm	•	•	-	-	-	-	-	-	-	-	-	-	-
120 mm	-	-	-	-	-	-	-	-	-	•	-	-	-
Variable 24 - 68 mm	-	-	-	-	-	-	-	-	-	-	•	-	-
Variable 65 - 120 mm	-	-	-	-	-	-	-	-	-	-	-	•	-
Technical characteristics													
with dust extraction	-	-	-	-	-	-	-	-	-	-	•	•	
with direct collet	•	•	-	-	-	-	-	-	-	-	-	-	-
with drill chuck collet	•	•	•	•	•	•	•	•	•	•	•	•	•
with drill depth limit	-	-	-	-	-	-	-	•	-	-	-	-	-
Accessories (optional)													
Dust extraction	300	•	-	-	-	-	-	-	-	-	-	-	-
ProfiX distance cutter	307	-	-	•	•	•	•	-	-	•	-	-	-
ProfiX distance cutter with dust extraction	307	-	-	•	•	•	•	-	-	•	-	-	-
Centring aid	304	-	-	-	-	-	-	•	-	-	-	-	-
Centering aid Multi 4000	306	-	-	•	-	-	-	-	-	-	-	-	-

<sup>1</sup> Ventilate frequently; <sup>2</sup> Use cutting oil; <sup>3</sup> up to 1 mm; <sup>4</sup> with restrictions; <sup>5</sup> up to 10 mm



## Diamond grinding head and drilling template

Diamond grinding head for precise and quick installation openings for one-gang boxes and one-gang junction boxes in all types of walls. Clean and low-dust handling due to dust extraction.

- Quick creation of installation openings in all types of walls
- For electric drills with direct attachment or 13 mm chuck
- With optional dust extraction
- Drilling template for exact marking of the centering hole

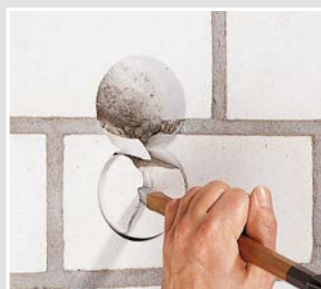
### Installation



Pre-drilling. Create centering hole at a combination distance for multiple boxes using drilling template.



Fit diamond grinding head and diamond cut Ø 68 mm or Ø 82 mm holes.



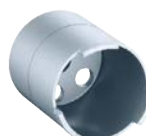
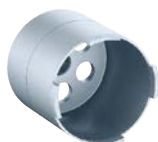
Chisel out drilled core.



Clean and even installation openings for quick further processing with plaster or Klemmfix®.

### Diamond grinding head with dust extractor

- Thread to screw on the direct or chuck attachment M18 x 1.5



3D animation

Drill Ø	82 mm	68 mm
Cutting depth	max. 70 mm	max. 70 mm
Art. No.	1088-02	1088-03
Inner packaging/shipping	- / 10	- / 10

### Dust extraction with direct attachment / Chuck attachment

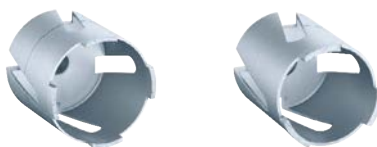
- for diamond grinding head with Ø 82 or Ø 68 mm
- Fits vacuum cleaner hoses from Ø 31 - 36 mm



Thread for Bosch and Flex	5/8"	-	-
UN thread	-	M18 x 2,5	-
Chuck attachment with hexagonal spanner	-	-	12 mm
Art. No.	1088-21	1088-16	1088-41
Inner packaging/shipping	- / 1	- / 1	- / 1

## Diamond grinding head without dust extractor

- Thread to screw on the direct or chuck attachment M18 x 1.5



3D animation

<b>Drill Ø</b>	<b>82 mm</b>	<b>68 mm</b>
Cutting depth	max. 70 mm	max. 70 mm
<b>Art. No.</b>	<b>1088-00</b>	<b>1088-01</b>
Inner packaging/shipping	- / 10	- / 10

## Direct attachment / Chuck attachment

- for screwing onto the electric drill spindle



<b>Thread for Bosch and Flex</b>	<b>5/8"</b>	-	-
UN thread	-	M18 x 2,5	-
Chuck attachment with hexagonal spanner	-	-	12 mm
<b>Art. No.</b>	<b>1088-20</b>	<b>1088-15</b>	<b>1088-40</b>
Inner packaging/shipping	- / 1	- / 1	- / 1

## Centering drill

- for all direct and chuck attachments
- with hardened metal cutter
- Drill length: 125 mm



<b>Diameter</b>	<b>6 mm</b>
<b>Art. No.</b>	<b>1088-30</b>
Inner packaging/shipping	- / 1

## Drilling template

- for vertical and horizontal pre-drilling of combination distances
- 71 mm for standard combinations
- 91 mm for separate covers on low-voltage devices
- with hardened drilling bushes
- with fold-out guide pin for first drill hole



3D animation

<b>Art. No.</b>	<b>1190-65</b>
Inner packaging/shipping	- / 1



## Spirit level cover

Spirit level cover for quick and exact positioning of one-gang boxes and one-gang junction boxes in the masonry.

- For all KAISER one-gang boxes and one-gang junction boxes
- Guaranteed horizontal or vertical fit of the screw domes
- Quick assembly in a single action

### Installation



Prepare the wall opening with plaster as usual.



Insert the spirit level cover into the upper box.



Push the box combination into the wall opening and align.



The spirit level immediately indicates the perfect fit.

### Spirit level cover

- Box spirit level
- To straighten one-gang boxes and one-gang junction boxes for horizontal and vertical assembly with plaster



**Art. No.**

**1190-60**

Inner packaging/shipping

5 / 100

### Marking chalk

- for marking of switch symbols and wiring instructions
- colour: blue, waterproof



**Art. No.**

**1190-55**

Inner packaging/shipping

- / 12



## Hardened metal cutter Ø 20 mm for KAISER mini equipment carrier



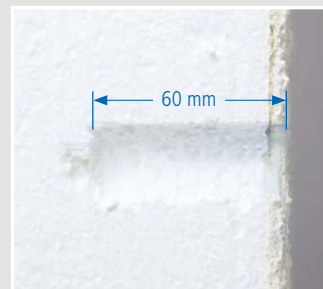
The hardened metal cutter Ø 20 mm with hardened metal cutters for exact installation openings. Art. No. 1088-06



By simply unscrewing the cutter head, the drilled core can be removed quickly using a centering drill.



The drilling depth stop ensures that only the amount of insulation material is removed which is necessary to secure the mini equipment carrier.



The insulating capacity remains intact despite the installation opening.

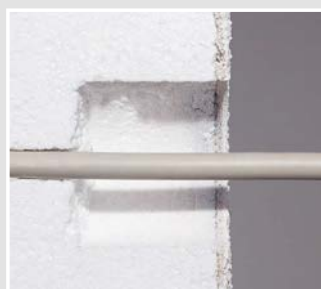
## Hardened metal cutter 180 for one-gang junction boxes ECON® Styro55



If a cable is present, you can drill 68 mm installation openings using the hardened metal cutter 180.



The centering aid Ø 68 mm and depth stop on the cutter ensure a precise opening without damaging the existing cable.



The depth stop ensures minimal interference with the insulation, which prevents the creation of heat bridges.



KAISER carbide metal cutter 180 with depth stop, Art. No. 1088-07.

## Processing instructions

Make sure that the cable has been fed through the insulation material panel. The hardened metal cutter 180 must not be used with cables which are directly under the plaster layer of the external insulation.

### Hardened metal cutter 20 mm

- Making installation openings in existing composite thermal insulation systems or lightweight walls
- Ø 20 mm, for the KAISER mini equipment carrier and for KAISER cable seals
- with bit stop to prevent heat bridges
- with centering drill for precise positioning
- fits all battery-powered drills and electric drills with 10 mm chuck
- removable cutter head for easy removal of the drilled core



3D animation



### Hardened metal cutter 180

- Creating installation openings in existing thermal insulation composite systems for an existing cable
- for ECON® Styro55 one-gang junction boxes
- fits all electric drills with 10 mm chuck
- with bit stop to prevent heat bridges
- 2 centering aids Ø 68 mm (Art. No. 1090-68) for exact cutter guiding



3D animation



Length	80 mm	180 mm
Drill Ø	20 mm	68 mm
Cutting depth	max. 60 mm	max. 70 mm
Art. No.	1088-06	1088-07
Inner packaging/shipping	- / 48	- / 1

# Flush-mounting and masonry tools

for masonry installation

## Technical information on centering aid Ø 68 mm



KAISER centering aid Ø 68 mm for nailing on, Art. No. 1090-68.



For combinations position the centering aid at a distance of 71 mm.



Use KAISER tool Styro55 for fast, easy fitting of the swivels.



KAISER setting tool Styro55 Art. No. 1090-21.

## INNOVATION

### Centering aid Ø 68 mm

- for exact installation openings in existing composite thermal insulation system
- Exact guiding of the hardened metal cutter 180 (Art. No. 1088-07)
- can be combined for standard combinations of 71 mm
- for attachment and exact positioning on the composite thermal insulation system



<b>Diameter</b>	<b>68 mm</b>
<b>Art. No.</b>	<b>1090-68</b>
Inner packaging/shipping	10 / 100

## INNOVATION

### Styro55 tool

- for fast and secure attaching of the ECON® Styro55 one-gang junction box



<b>Art. No.</b>	<b>1090-21</b>
Inner packaging/shipping	10 / 100

## Turbo cutter MULTI 4000

MULTI 4000 turbo cutter for faster cutting speeds, due to new geometry with especially high endurance in three different sizes. Advantages compared to previous model (MULTI 2000):

- 40% faster due to new cutting geometry
- 20% higher endurance than conventional cutters
- With countersink hole cutter and plate ejector
- Cutting diameter 35 mm/68 mm/74 mm
- Specially for plasterboard, softwood/plywood boards



### Technical information on MULTI 4000 turbo cutter



### Turbo cutter MULTI 4000

- high cutting power
- precise cut for circular drilled holes
- high radial runout accuracy
- Removable countersink hole cutters
- fits all electric drills with 13 mm chuck



3D animation



Cut hole Ø	35 mm	68 mm	74 mm
Depth of cutting hole	36 mm	36 mm	36 mm
with countersink hole cutter and plate ejector	-	•	•
with countersink hole saw, without plate ejector	•	-	-
<b>Art. No.</b>	<b>1082-10</b>	<b>1083-10</b>	<b>1084-10</b>
Inner packaging/shipping	- / 10	- / 10	- / 10

### Cutter head MULTI 4000

- high cutting power
- precise cut for circular drilled holes
- high radial runout accuracy



Cut hole Ø	35 mm	68 mm	74 mm
Depth of cutting hole	36 mm	36 mm	36 mm
with plate ejector	-	•	•
without ejector of the drilling core	•	-	-
<b>Art. No.</b>	<b>1082-09</b>	<b>1083-09</b>	<b>1084-09</b>
Inner packaging/shipping	- / 5	- / 5	- / 5



# Cavity wall tools

for cavity wall installation

## Countersink hole cutter MULTI 4000

- for flush-mounting box and casing installation
- inductively hardened



Cut hole Ø	35 mm	68 mm	74 mm
Art. No.	1082-05	1083-05	1084-05
Inner packaging/shipping	- / 1	- / 1	- / 1

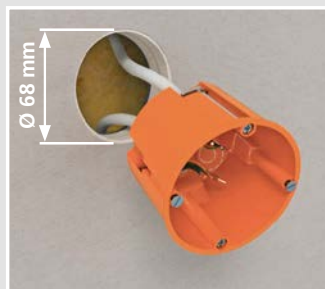
## MULTI 4000 cutter set

- stable plastic case
- Contents: 3 Multi 4000 cutters with countersink hole cutter, Ø 35, 68, 74 mm (1082/83/84-10), 1 set of insulation stripping pliers for NYM cables
- Accessories: folding rule, drilling template, pencil

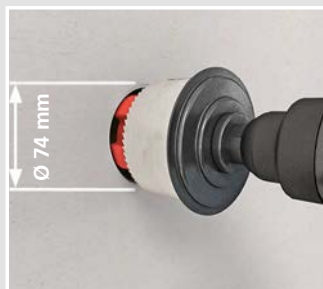


Art. No.	1083-20
Inner packaging/shipping	- / 1

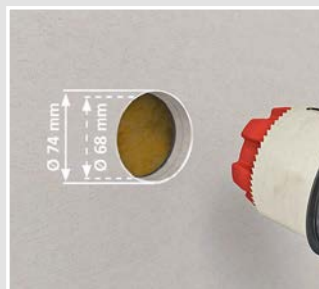
## Centering insert 68/74 mm – operation



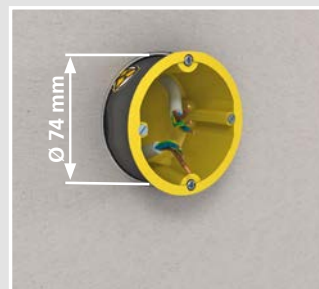
The traditional box is removed from the Ø 68 mm installation opening



Centering insert 68/74 (Art. No. 1083-99) is inserted into the existing opening together with the Ø 74 mm cutter (e.g. MULTI 4000, Art. No. 1084-10).



The existing opening can easily be expanded to Ø 74 mm



Now the traditional installation box can be replaced by a sound insulation, fire protection or radiation protection box.

## INNOVATION

### Centering insert 68/74

- for expanding existing installation openings from Ø 68 mm to Ø 74 mm
- Exact guide for cavity wall cutter MULTI 4000
- for single and multi-layer boarded lightweight walls



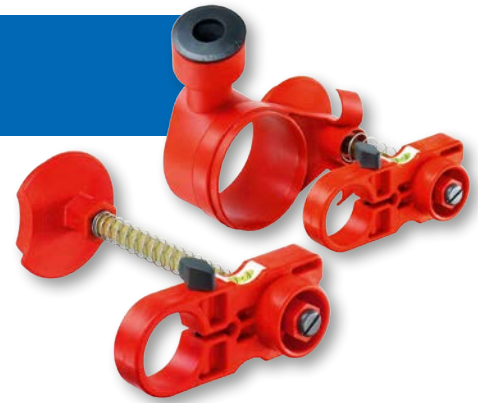
## INNOVATION

Diameter	68 mm
Art. No.	1083-99
Inner packaging/shipping	10 / 100

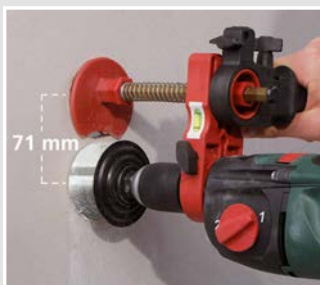
## Spacing cutter, Profix

Profix, the bit for electric drills for quick and precise cutting of Ø 68 mm installation openings at the standard distance. Can be used in cut openings or existing cavity wall boxes. Available with and without dust extractor.

- With three spirit levels for exact insertion of horizontal and vertical combinations
- Standard distance of 71 mm or 91 mm without time-consuming measuring and marking
- For expansion of existing cavity wall box combinations
- For electric drills with Ø 43 mm clamping collar
- centering plate can also be used in existing cavity wall boxes for the expansion of existing equipment



### Distance cutter Profix – operation



Distance 71 mm: Cut first opening as usual. Insert centering plate into first opening and cut second opening.



Adjust from 71 to 91 mm: Pull back clip nose with spring and turn centering plate by 180°.



Move centering plate to new position and lock centering plate.



Distance 91 mm: Insert centering plate into existing hole or box, align and cut additional opening.

### Spacing cutter, Profix

- for the cutting of cavity wall installation openings with dimensionally accurate combination distances of 71 mm, optionally adaptable to a distance of 91 mm, for horizontal and vertical combinations



3D animation



<b>Up to 13 mm chuck</b>	•	-	•	-
for SDS-plus quick-change chuck	-	•	-	•
with dust extractor	-	-	•	•
<b>Art. No.</b>	<b>1083-25</b>	<b>1083-28</b>	<b>1083-27</b>	<b>1083-29</b>
Inner packaging/shipping	- / 10	- / 1	- / 1	- / 1

### Cavity wall box template

- for marking cutting-out distances for combinations
- standard combination distance 71 mm to German DIN 49 075 as well as 91 mm distance for separate covers for low-voltage equipment



<b>Art. No.</b>	<b>1085-99</b>
Inner packaging/shipping	- / 100

# Cavity wall tools

for cavity wall installation

## MULTI 2000 HM

- Carbide tipped cutter head and countersink hole cutter
- extremely powerful
- very long operating life
- Removable countersink hole cutters
- fits all electric drills with 13 mm chuck



<b>Cut hole Ø</b>	<b>68 mm</b>	<b>74 mm</b>
Depth of cutting hole	36 mm	36 mm
with countersink hole cutter and plate ejector	•	•
<b>Art. No.</b>	<b>1083-70</b>	<b>1084-70</b>
Inner packaging/shipping	- / 10	- / 10

## MULTI 2000 HM cutting head

- hardened metal tipped
- extremely powerful
- very long operating life



<b>Cut hole Ø</b>	<b>68 mm</b>	<b>74 mm</b>
with plate ejector	•	•
<b>Art. No.</b>	<b>1083-69</b>	<b>1084-69</b>
Inner packaging/shipping	- / 10	- / 10

## MULTI 2000 HM countersink hole cutter

- hardened metal tipped
- for flush-mounting box and casing installation



<b>Cut hole Ø</b>	<b>68 mm</b>	<b>74 mm</b>
<b>Art. No.</b>	<b>1083-65</b>	<b>1084-65</b>
Inner packaging/shipping	- / 1	- / 1

## Collets

- for cutters Art. Nos. 1082-10, 1083-10, 1084-10, 1083-70, 1082-20, 1084-00, 1084-70



<b>for 10 mm chuck with twist drill</b>	•	-	-
for 13 mm chuck with twist drill	-	•	-
for SDS-plus quick-change chuck without twist drill	-	-	•
<b>Art. No.</b>	<b>1083-31</b>	<b>1083-32</b>	<b>1083-35</b>
Inner packaging/shipping	- / 1	- / 1	- / 1

## Twist drill

- Cylindrical shank with clamping surface
- for clamping spigots Art. Nos. 1083-31, 1083-32, 1083-35



## Plate ejector

- Mounting instructions: fit cutter, pull out old ejector using tool. Use tool to press new ejector over collar on base of cutter
- for Art. Nos. 1083-10, 1083-70, 1084-00, 1084-10, 1084-70



<b>Diameter</b>	<b>6 mm</b>	<b>-</b>
<b>Art. No.</b>	<b>1083-30</b>	<b>1083-37</b>
Inner packaging/shipping	- / 5	- / 5

## Standard cutter

- without countersink
- with saw blade Art. No. 1086-09
- with twist drill with hexagonal shank



<b>Cut hole Ø</b>	<b>68 mm</b>
Depth of cutting hole	18 mm
<b>Art. No.</b>	<b>1086-00</b>
Inner packaging/shipping	- / 10

## Saw blades

- closed version
- hardened cutting teeth
- for Art. No. 1086-00



<b>Cut hole Ø</b>	<b>35 mm</b>	<b>68 mm</b>	<b>74 mm</b>
Depth of cutting hole	18 mm	18 mm	18 mm
<b>Art. No.</b>	<b>1085-09</b>	<b>1086-09</b>	<b>1087-09</b>
Inner packaging/shipping	- / 5	- / 5	- / 5

## Saw blades

- closed version
- hardened cutting teeth
- for Art. No. 1086-00



<b>Cut hole Ø</b>	<b>68 mm</b>	<b>74 mm</b>
Depth of cutting hole	40 mm	40 mm
<b>Art. No.</b>	<b>1086-08</b>	<b>1087-08</b>
Inner packaging/shipping	- / 4	- / 4

## Countersink hole cutter

- for flush-mounting box and casing installation
- inductively hardened
- for Art. No. 1086-00



## Twist drill

- with hexagonal shank
- with clamping faces for 18 and 40 mm cutting depths
- for Art. No. 1086-00



<b>Diameter</b>	<b>-</b>	<b>8 mm</b>
for cut hole Ø	68 mm	-
<b>Art. No.</b>	<b>1086-05</b>	<b>1086-30</b>
Inner packaging/shipping	- / 1	- / 5

# Cavity wall tools

for cavity wall installation

## Hardened metal cutter

- specially for sheet planking made of unalloyed/alloyed steels, non-ferrous metals
- Tapered centering drill for exact drilling



Cut hole Ø	68 mm	74 mm
Depth of cutting hole	15 mm	60 mm
<b>Art. No.</b>	<b>1083-95</b>	<b>1083-74</b>
Inner packaging/shipping	- / 10	- / 1

## Hardened metal cutter

- specially for hard wood materials, plywood, MDF and OSB boards
- no clogging due to large chip space
- long service life
- Replacement drill (not shown) Art. No. 1083-53
- Removable countersink hole cutters
- fits all electric drills with 13 mm chuck



Cut hole Ø	68 mm
Depth of cutting hole	55 mm
with countersink hole saw	•
<b>Art. No.</b>	<b>1083-51</b>
Inner packaging/shipping	- / 10

## Bi-metallic cutter Ø 120 mm

- fits all electric drills with 13 mm chuck
- for cavity wall junction boxes
- Art. Nos. 9073-01/-77 and 9273-91/-77



Cut hole Ø	120 mm
Depth of cutting hole	40 mm
for frontal fitting of ThermoX® Arti. No. 9300-01/-02/-03/-22	•
<b>Art. No.</b>	<b>1082-20</b>
Inner packaging/shipping	- / 1



## Bi-metal cutter for ThermoX® housings

· fits all electric drills with 13 mm chuck



Cut hole Ø	74 mm	79 mm	86 mm	120 mm
Depth of cutting hole	-	-	-	40 mm
for rear fitting of ThermoX® (ceiling exit 68 mm)	•	-	-	-
for rear fitting of ThermoX® (ceiling exit 75 mm)	-	•	-	-
for rear fitting of ThermoX® (ceiling exit 82 mm)	-	-	•	-
for frontal fitting of ThermoX® Arti. No. 9300-01/-02/-03/-22	-	-	-	•
<b>Art. No.</b>	<b>1084-00</b>	<b>1082-79</b>	<b>1082-86</b>	<b>1082-20</b>
Inner packaging/shipping	- / 10	- / 1	- / 1	- / 1

## Bi-metallic cutter Ø 86 mm

- Removable countersink hole cutters
- with twist drill with hexagonal shank
- fits all electric drills with 10 mm chuck
- for flush-ceiling installation of ThermoX® LED housing (DA 86), Art. No. 9320-20, 9320-21



<b>Cut hole Ø</b>	<b>86 mm</b>
Depth of cutting hole	38 mm
with countersink hole saw	•
<b>Art. No.</b>	<b>1087-86</b>

FLUSH-MOUNTING

CAVITY WALL

CONCRETE

HOUSINGS

FIRE PROTECTION

CABLE GLANDS

TOOLS

SERVICE

# Cavity wall tools

for cavity wall installation



## VARIOCUT

VARIOCUT universal hole cutter for clean circular cut-outs in cavity wall materials. The hardened metal cutter inserts can cut variable openings with a cutting depth of 45 mm.

- Making clean circular cut-outs using protective cover with dust extractor
- For light installation openings and circular cut-outs 24-120 mm in diameter
- Continuously adjustable cutter inserts
- centering cutter aid making it easy to guide the centering drill

### Operation



Set and lock required diameter and prescribed cutting depth.



Mark the centre point for drilling (use centering cutter if necessary). Set appropriate speed on electric drill. Pre-drill plates to Ø 6 mm before cutting.



Use VARIOCUT centering drill. Start drilling, push the protective cover down flat on the surface and cut opening applying light pressure.



As soon as a hole has been drilled, turn off the electric drill immediately. Wait until the machine has fully stopped before removing the VARIOCUT and removing the cut-out material.

### VARIOCUT universal hole cutter for cavity wall building materials

· with hardened metal cutter inserts



3D animation

Cut hole Ø	24 - 68 mm	65 - 120 mm
Depth of cutting hole	45 mm	45 mm
for frontal fitting of ThermoX® Arti. No. 9300-01/-02/-03/-22	-	•
for cavity wall junction box Art. No. 9073-01/-77/-78/-91	-	•
<b>Art. No.</b>	<b>1089-10</b>	<b>1089-00</b>
Inner packaging/shipping	- / 5	- / 5

### VARIOCUT box

- robust metal case
- Contents: 1 VARIOCUT 1089-00 (Ø 65-120 mm), 1 cutter unit 1089-01 (Ø 24-68 mm), 1 cutter centering aid 1089-31 (incl. 10 adhesive foils)



<b>Art. No.</b>	<b>1089-25</b>
Inner packaging/shipping	- / 1

## Cutter unit for cavity wall building materials

- for VARIOCUT universal hole saw
- for light installation openings and circular cut-outs of any kind



<b>Cut hole Ø</b>	<b>24 - 68 mm</b>	<b>65 - 120 mm</b>
<b>Art. No.</b>	<b>1089-01</b>	<b>1089-02</b>
Inner packaging/shipping	- / 1	- / 1

## Cutter unit for metal

- for VARIOCUT universal hole saw
- for thickness up to 1 mm
- for light installation openings and circular cut-outs of any kind



<b>Cut hole Ø</b>	<b>20 - 64 mm</b>	<b>61 - 116 mm</b>
<b>Art. No.</b>	<b>1089-91</b>	<b>1089-92</b>
Inner packaging/shipping	- / 1	- / 1

## Hardened metal cutter inserts

- For VARIOCUT cutting unit



<b>For cavity wall building materials</b>	•	-
For metal	-	•
<b>Art. No.</b>	<b>1089-33</b>	<b>1089-34</b>
Inner packaging/shipping	- / 1	- / 1

## Twist drill for VARIOCUT

- for VARIOCUT universal hole saw
- with clamping shank



<b>Diameter</b>	<b>6 mm</b>
<b>Art. No.</b>	<b>1089-30</b>
Inner packaging/shipping	- / 5

## Cutter centering aid

- centering aid for VARIOCUT
- for hard-to-work materials
- for Ø 6 mm drills
- with 10 pieces of adhesive foil



<b>Art. No.</b>	<b>1089-31</b>
Inner packaging/shipping	- / 1

## Adhesive foil

- for locating centering aid Art. No. 1089-31
- double-sided adhesion
- for multiple use



<b>Art. No.</b>	<b>1219-10</b>
Inner packaging/shipping	- / 1



## Universal opening cutter

Universal opening cutter for creating exact openings for cable and conduit entries in plastics. Creating exact openings for boxes and housings always results in exact air-tight, smoke-tight and concrete-tight entries.

- For conduit and cable entries
- For air-tight and smoke-tight openings
- For strain-relieved openings
- For all types of plastic

### Operation



Depending on the use, find the required diameter in the corresponding table and locate on tool.



Press snap-in button. Turn the handle and push to required position until the arrow point is visible in the opening. Turn handle back and click into place.



Push the point into the housing and cut out required opening by turning to the right.



TIP: To cut several openings or work with hard plastic, you can fit the opening cutter on the 1/4" bit of a battery-powered drill.

### Assignment table for universal cavity wall opening cutter

Air-tight cavity wall installation		Ø setting
NYM cable	3 x 1.5 mm <sup>2</sup>	7.5
	4 x 1.5 mm <sup>2</sup>	8.5
	5 x 1.5 mm <sup>2</sup> ; 3 x 2.5 mm <sup>2</sup>	9.5
	7 x 1.5 mm <sup>2</sup> ; 5 x 2.5 mm <sup>2</sup>	10.5
Low-voltage cables	Integrated heavy current and MSR-Bus cable (N)Y(Y(St)Y)M-J 3 x 1.5 mm <sup>2</sup>	10.5
	EDP cable, S/STP 4 x 2 AWG23/1	7.5
	EDP cable, 100 Mb, S/STP 4 x 2 x AWG23/1	6.0
	Coaxial cable, double screening	6.0
	Coaxial cable, single screening	5.0
	BUS cable YCYM 2 x 2 x 0.8	5.0
	Screened EDP cable, plus external screening	5.0
	Cable for telephone and signal transmission with screening	4.0
	Telephone cable without screening	4.0
Support connector	9060-98	Connector
Flexible conduits (crimped) in acc. with DIN EN 60423	DIN EN 16 - Ø 16 mm	14.0
	DIN EN 20 - Ø 20 mm	17.0
	DIN EN 25 - Ø 25 mm	21.0

Cavity wall installation for fire-protection boxes HWD 30, HWD 90 and HWD B15		Ø setting
NYM cable	3 x 1.5 mm <sup>2</sup>	8.5
	5 x 1.5 mm <sup>2</sup>	9.5
	3 x 2.5 mm <sup>2</sup>	9.5

## Assignment table for universal concrete construction opening cutter

Concrete construction		Ø setting*
NYY cable	3 x 1.5 mm <sup>2</sup>	10.5
	4 x 1.5 mm <sup>2</sup>	10.5
	5 x 1.5 mm <sup>2</sup> ; 3 x 2.5 mm <sup>2</sup>	10.5
	7 x 1.5 mm <sup>2</sup> ; 5 x 2.5 mm <sup>2</sup>	14.5
Conduits flexible (corrugated) in acc. with DIN EN 60423	DIN EN 20 — Ø 20 mm	19.5
	DIN EN 25 — Ø 25 mm	22.5
Conduits flexible (corrugated with smooth sheath) in acc. with DIN EN 60423	DIN EN 20 — Ø 20 mm	19.0
	DIN EN 25 — Ø 25 mm	22.5

Universal opening cutter  
for plastics

- for manufacture of exact entry size
- for low-voltage wiring of Ø 4 - 7.5 mm
- for sheathed cabling up to 5 x 2.5 or 7 x 1.5
- for cable NYY up to 5 x 2.5
- for DIN EN conduits (flexible) with outer Ø of up to 20/25 mm
- with 1/4" chuck size for battery-powered drills



3D animation



For exact openings	4 - 22,5 mm
Art. No.	1085-80
Inner packaging/shipping	- / 10

## AMZ 2 stripping pliers

- for longer cables: integrated knife for longitudinal cutting
- ergonomic design - easy-to-use
- hardened and polished cutting knife



For stripping NYM cables	3 x 1,5, 5 x 2,5 mm <sup>2</sup>
Art. No.	1190-02
Inner packaging/shipping	- / 10



## Hole punch and expanding dowel fitting tool

- for concrete construction installation
- for fixing to steel formwork with expanding dowel 1217-02
- for all boxes, casings, bushes, etc.



<b>Length</b>	<b>150 mm</b>	<b>340 mm</b>
<b>Art. No.</b>	<b>1284-62</b>	<b>1284-63</b>
Inner packaging/shipping	- / 1	- / 1

## Nail inserter

- for concrete construction installation
- for fixing to wooden formwork with steel nails max. head Ø 4 mm
- for all boxes, casings, bushes, etc.



3D animation



<b>Length</b>	<b>150 mm</b>	<b>340 mm</b>
<b>Art. No.</b>	<b>1284-69</b>	<b>1284-68</b>
Inner packaging/shipping	- / 1	- / 1

## Punch pliers

- for concrete construction installation
- for exact entries for cables and conduits
- with plate ejector
- punch bits exchangeable



3D animation



<b>DIN EN conduit Ø</b>	<b>20 mm</b>	<b>25 mm</b>
<b>Art. No.</b>	<b>1286-33</b>	<b>1286-34</b>
Inner packaging/shipping	- / 1	- / 1

## Punch bit inserts for punch pliers

- consists of cutter plate and cutting punch, hardened and polished



<b>DIN EN conduit Ø</b>	<b>20 mm</b>	<b>25 mm</b>
<b>Art. No.</b>	<b>1285-33</b>	<b>1285-34</b>
Inner packaging/shipping	- / 1	- / 1

## Reamer

- for concrete construction installation
- for enlarging pre-cut holes



DIN EN conduit Ø	25 mm	32 mm	40 mm
Art. No.	1284-34	1284-35	1284-36
Inner packaging/shipping	- / 1	- / 1	- / 1

## Step drill

- for concrete construction installation
- for manufacturing conduit entry openings
- can be adapted for battery-powered drills



3D animation



DIN EN conduit Ø	10 - 40 mm
Art. No.	1284-32
Inner packaging/shipping	- / 10

FLUSH-MOUNTING

CAVITY WALL

CONCRETE

HOUSINGS

FIRE PROTECTION

CABLE GLANDS

TOOLS

SERVICE